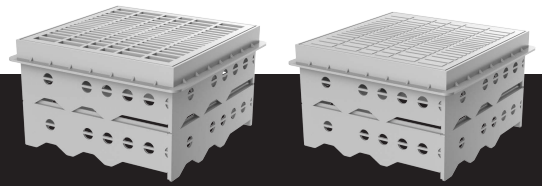


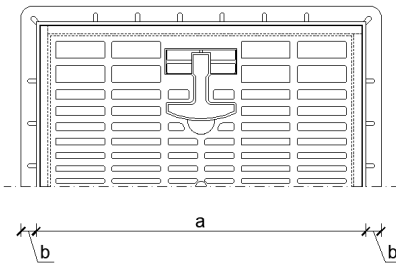
Shafts for green roofs TOPWET TWZ (TWZF)



BASIC INFORMATION

purpose	control and inspection shaft for roofs with a vegetation layer
material	shaft body material – PA6 polyamide, protective cover – polypropylene
colour	grey
load category	K3 – 300 kg
certification	EN 1253-2:2016 - Gullies for buildings - Part 2: Roof drains and floor gullies without trap
manufacturer	TOPWET s.r.o., náměstí Viléma Mrštíka 62, 664 81 Ostrovačice, Czech Republic
description	TWZF variant is a version with a non-perforated plastic walkable covering grid to prevent algae bloom on drainage systems

TECHNICAL PARAMETERS



Shafts for green roofs

Type	Dimensions [mm]	
	a	b
TWZ(TWZF) 300×300×130	290 × 290	18
TWZ(TWZF) 400×400×130	390 × 390	18
TWZ(TWZF) 300×300×230	290 × 290	18
TWZ(TWZF) 400×400×230	390 × 390	18
TWZ(TWZF) 300×300×330	290 × 290	18
TWZ(TWZF) 400×400×330	390 × 390	18
TWZ(TWZF) 300×300×__	290 × 290	18
TWZ(TWZF) 400×400×__	390 × 390	18